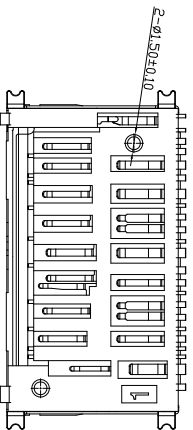


PART NUMBER: JCN-S71G-ULAN-XXX6

Plastic  
 Color:  
 A=Blue  
 B=Black  
 Gold  
 Plating:  
 G=Gold  
 Flash  
 A=3u"  
 B=6u"  
 C=10u"  
 D=15u"  
 E=30u"  
 Package:  
 R=Toping  
 Reel  
 T=Tary  
 U=Tube

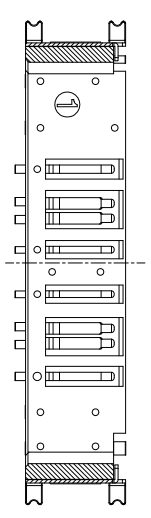
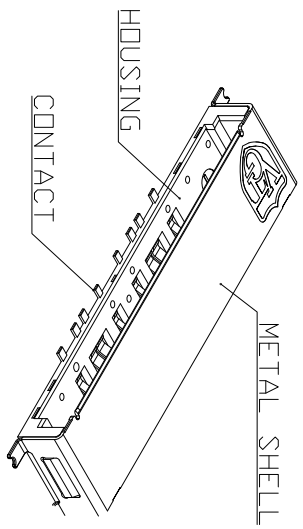
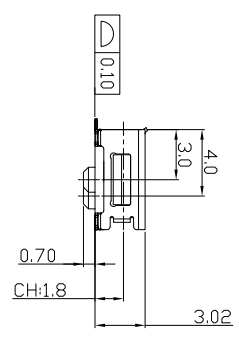
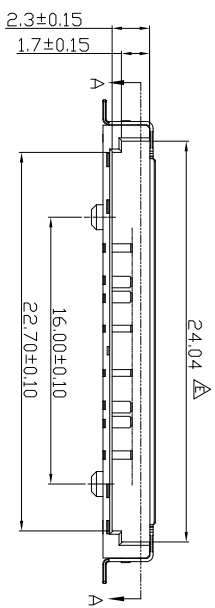
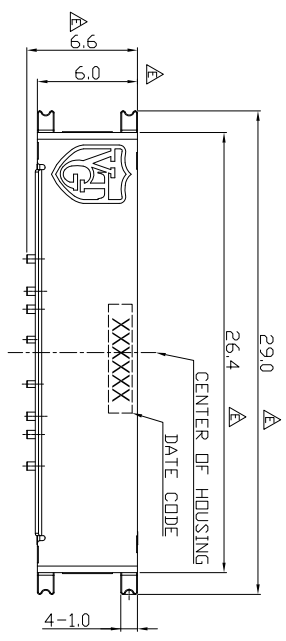
Note:

- # Specification
- # Electrical Characteristics :
  - Current Rating:0.5A.
  - Withstanding Voltage:AC500V r.m.s.
  - Insulation Resistance:100Mmegohms
  - Minimum at DC 500V.
  - Contact Resistance:100Miliohms Maximum.
- # Mechanical Characteristics:
- # Mating Cycles: 10000 Insertions.
- # Environmental :
  - Operating Temperature:-25°C to +85°C.

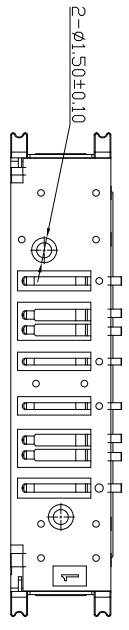


CHECKED Leon	UNLESS OTHERWISE SPECIFIED TOLERANCE	NAME SD7.0 express Card, Offset 1.8mm, Gold Flash,With Shield SMT, Connector	SCALE	UNIT	PART NO. JCN-S71G-ULAN-XXXX6	HF ROHS THE BSM OF ROHS COMPLIANT COMPONENT PRODUCT	V-GENERAL TECHNOLOGY 維將科技股份有限公司
			APPROVED Xavier	DIMENSION THRU TOLERANCE			
REV. X0	ANGLE	±5°	SIZE A4	SHEET 1/4	DOC. NO. JCN-S71G-ULAN-XXXX6		

MARK	NEW DESIGN	DRAWN	MMDYY'YY'
	REVISION RECORD	DRAWN	111021



SECTION A-A  
SCALE: 1:1



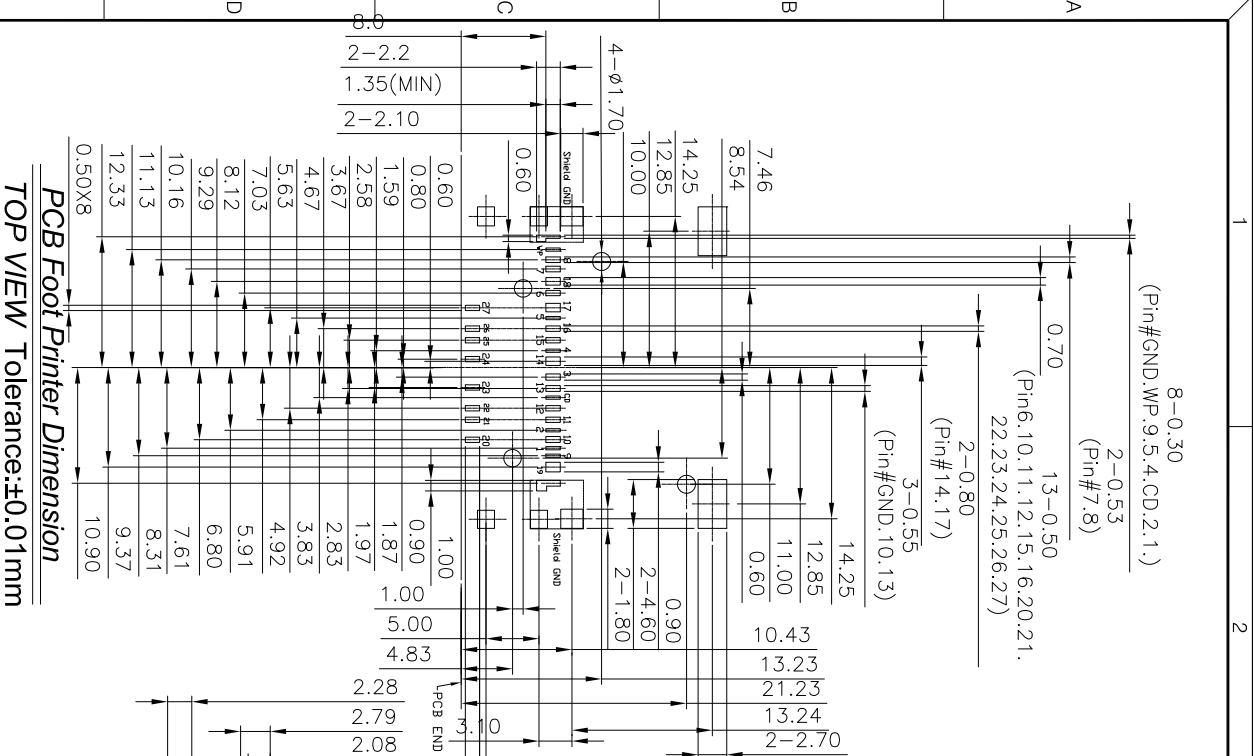
- Plastic: \_\_\_\_\_  
Color: \_\_\_\_\_  
A=Blue  
B=Black
- Gold: \_\_\_\_\_  
Plating: \_\_\_\_\_  
Flash  
A=3u"  
B=6u"  
C=10u"  
D=15u"  
E=30u"
- Package: \_\_\_\_\_  
R=Topring  
Reel  
T=Tape  
U=Tube

CHECKED Leon		UNLESS OTHERWISE SPECIFIED TOLERANCE		NAME S08.0 express Card, Orient 1.8mm, Gold Flash, With Shield SMT, Connector	
APPROVED Xv/ef		DIMENSIONAL TOLERANCE		SCALE N/A	
REV. X0		XXX ±0.35		UNIT MM	
		XXX ±0.25		SHEET 2/4	
		XXX ±0.15		MATERIAL/Plated/Notes ①SHIELD : STAINLESS STEEL/NICKEL PLATING ②HOUSING : HIGH TEMPERATURE PLASTIC ③CONTACTS : COPPER ALLOY/NICKEL UNDERPLATED OVERALL GOLD FLASH AT CONTACT AREAS/LEAD FREE TIN ALLOY AT TERMINATION.	
ANGLE ±5°		SIZE A4		PART NO. JCN-S81G-ULAN-XXXX6	
		DOC. NO. JCN-S81G-ULAN-XXXX6		DCC. NO. JCN-S81G-ULAN-XXXX6	

△X0	NEW DESIGN	DRAWN	MMDYY
MARK	REVISION RECORD	DRAWN	042021

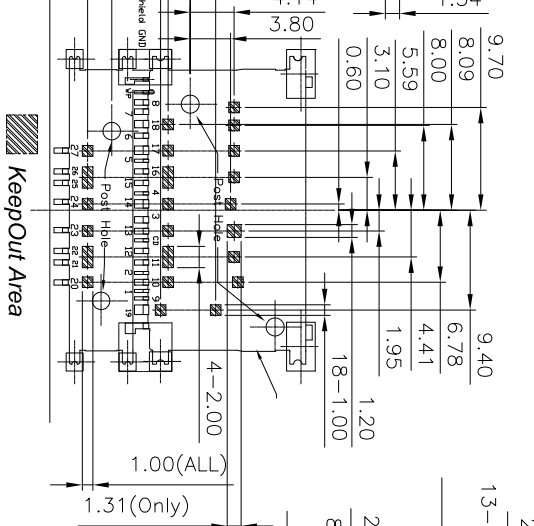
# Pin Define

Pin No.	Name	SD Mode	Type	Description	UHS-II Mode	Name	Type	Description	PCIE Mode	Description
Pin 1	GD/DAT3	I/O/PP/	Card Detect/D3to	Line(B13)	-	PERST#	I	PC Reset is a functional reset	-	-
Pin 2	CMD	pp	Command/Response	-	Not used	-	-	-	-	-
Pin 3	VSS1	S	Supply Voltage	Ground	VSS1	S	Supply Voltage	Ground	VSS1	Supply Voltage (3.3V)
Pin 4	VDD1	S	Supply Voltage	Ground	VDD1	S	Supply Voltage	Ground	VDD1	Supply Voltage (3.3V)
Pin 5	CLK	I	Clock	-	Not used	-	-	-	-	-
Pin 6	VSS2	S	Supply Voltage	Ground	VSS2	S	Supply Voltage	Ground	VSS2	Supply Voltage (3.3V)
Pin 7	DAT0	I/O/PP/	Data Line(B10)	-	REFCLK+	IUS	PCie Ref Clock	-	-	-
Pin 8	DAT1	I/O/PP/	Data Line(B11)	-	REFCLK-	IUS	PCie Ref Clock	-	-	-
Pin 9	DAT2	I/O/PP/	Data Line(B12)	-	CLKREQ#	IUS	Reference clock request signal. Also used by LP M sub-states	-	-	-
Pin 10	-	-	Not used	(Connected to Ground)	VSS3	S	Supply Voltage	Ground	VSS3	Supply Voltage
Pin 11	-	-	Not used	(Connected to Ground)	D0+	LVD3	PCie TX0+	IUS	Card input (stand 0)	-
Pin 12	-	-	Not used	(Connected to Ground)	D0-	LVD3	PCie TX0-	IUS	Card input (stand 0)	-
Pin 13	-	-	Not used	(Connected to Ground)	VSS4	S	Supply Voltage	Ground	VSS4	Supply Voltage (3.3V)
Pin 14	-	-	Not used	(Connected to Ground)	VDD2	S	Supply Voltage	Ground	VDD2	Supply Voltage (3.3V)
Pin 15	-	-	Not used	(Connected to Ground)	D1-	LVD3	PCie RX0-	DDS	Card output (stand 0)	-
Pin 16	-	-	Not used	(Connected to Ground)	D1+	LVD3	PCie RX0+	DDS	Card output (stand 0)	-
Pin 17	-	-	Not used	(Connected to Ground)	VSS5	S	Supply Voltage	Ground	VSS5	Supply Voltage (3.3V)
Pin 18	-	-	Not used	(Connected to Ground)	VDD3	S	Supply Voltage	Ground	VDD3	Supply Voltage (3.3V)
Pin 19	-	-	Not used	(Connected to Ground)	VDD4	S	Supply Voltage	Ground	VDD4	Supply Voltage (3.3V)
Pin 20	-	-	Not used	(Connected to Ground)	VSS6	S	Supply Voltage	Ground	VSS6	Supply Voltage (3.3V)
Pin 21	-	-	Not used	(Connected to Ground)	PCie TX1+	IUS	Card input (stand 1)	-	-	-
Pin 22	-	-	Not used	(Connected to Ground)	PCie TX1-	IUS	Card input (stand 1)	-	-	-
Pin 23	-	-	Not used	(Connected to Ground)	VSS7	S	Supply Voltage	Ground	VSS7	Supply Voltage (3.3V)
Pin 24	-	-	Not used	(Connected to Ground)	VDD2a	S	Supply Voltage	Ground	VDD2a	Supply Voltage (3.3V)
Pin 25	-	-	Not used	(Connected to Ground)	PCie RX1-	DDS	Card output (stand 1)	-	-	-
Pin 26	-	-	Not used	(Connected to Ground)	PCie RX1+	DDS	Card output (stand 1)	-	-	-
Pin 27	-	-	Not used	(Connected to Ground)	VSS8	S	Supply Voltage	Ground	VSS8	Supply Voltage (3.3V)



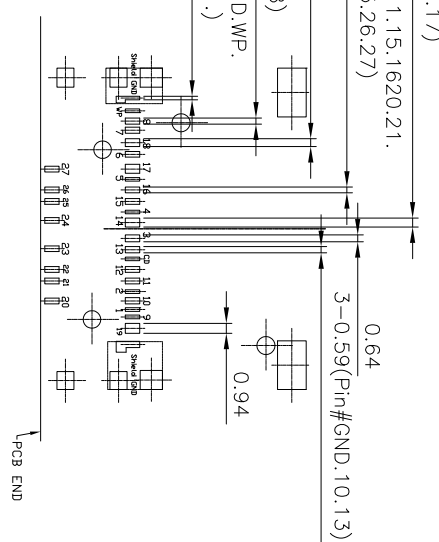
## Connector Pin Define Sequence

TOP VIEW Tolerance:±0.01mm



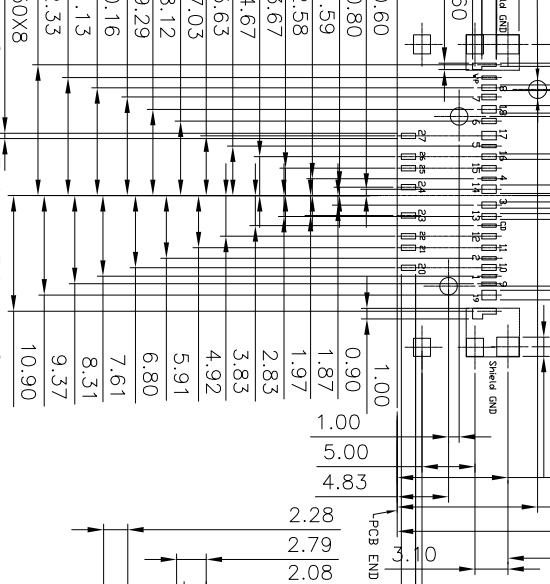
## SMT Stencil Aperture Dimension

TOP VIEW Tolerance:±0.01mm



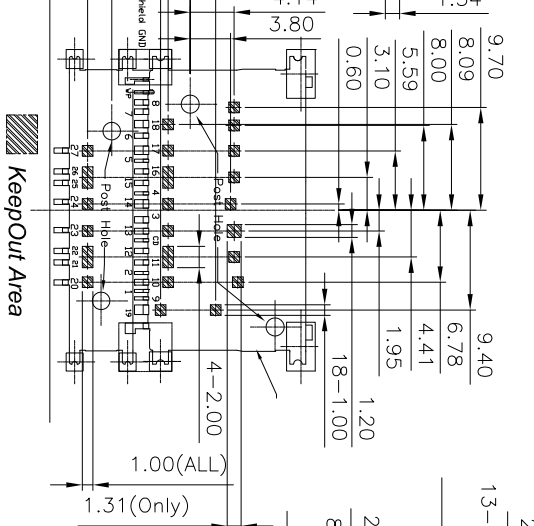
## PCB Foot Printer Dimension

TOP VIEW Tolerance:±0.01mm



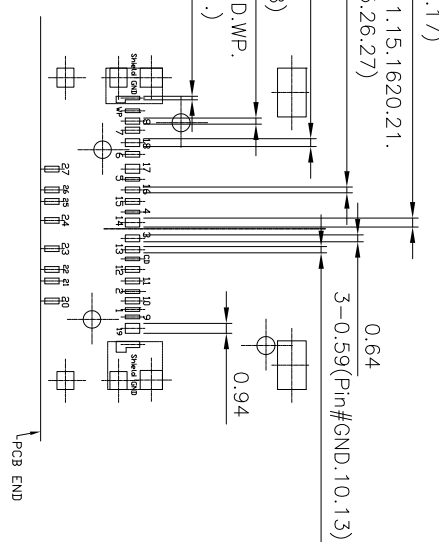
## Connector Pin Define Sequence

TOP VIEW Tolerance:±0.01mm

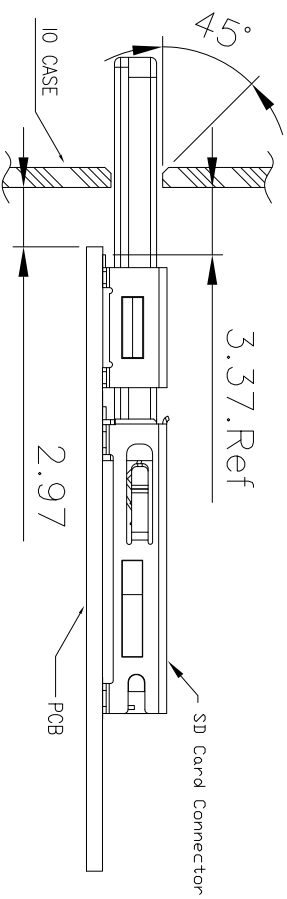


## SMT Stencil Aperture Dimension

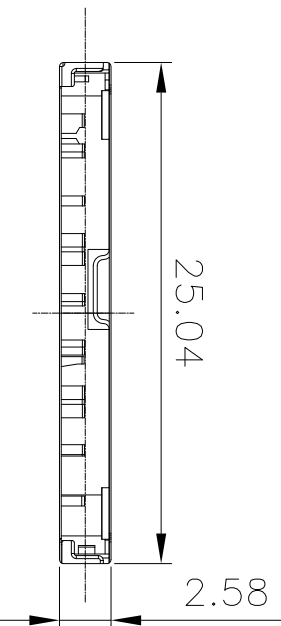
TOP VIEW Tolerance:±0.01mm



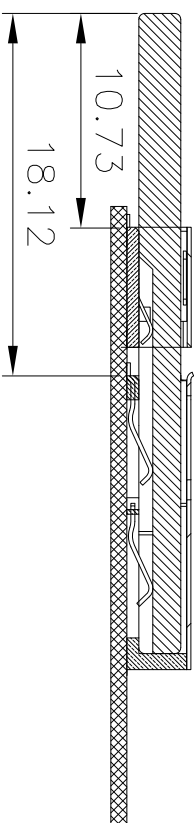
MARK	NEW DESIGN	REVISION RECORD	DRAWN	MMDYY	REV.	X0	CHECKED	Leon	APPROVED	Xvifer	NAME	S08.0 express Card, Offset 1.8mm, Gold Flash,with Shield SMT, Connector	PART NO.	JCN-S81G-ULAN-XXXX	DOC. NO.	JCN-S81G-ULAN-XXXX	HF ROHS	V-GENERAL TECHNOLOGY
																		維將科技股份有限公司



# IO PANEL

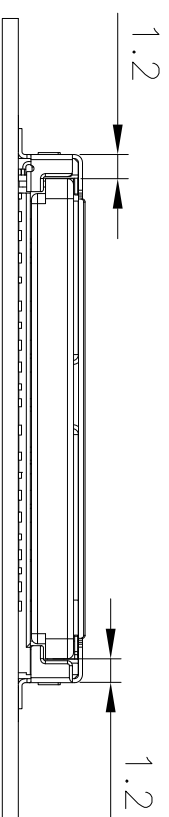


# Panel Cut Out



CARD INTO RECEPTACLE REPRESENT VIEW

<Side View>



CARD INTO RECEPTACLE REPRESENT VIEW

<Front View>

CHECKED Leon		UNLESS OTHERWISE SPECIFIED TOLERANCE		NAME SD7.0 express Card, Orient 1.8mm, Gold Finish With Shield SMT, Connector	
APPROVED Xv/ef		DIMENSIONAL TOLERANCE		SCALE N/A	
REV. X0		XX	±0.35	SIZE A4	SHEET 4/4
MARK		XXX	±0.25		
NEW DESIGN		XXXX	±0.15		
REVISION RECORD		ANGLE	±5°		
DRAWN MDDYY				PART NO. JCN-S81G-ULAN-XXX6	
DRAWN 042021				DCC. NO. JCN-S81G-ULAN-XXX6	